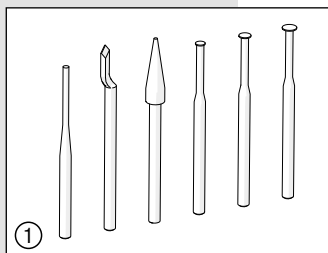


Parallelometer

Instructions for use



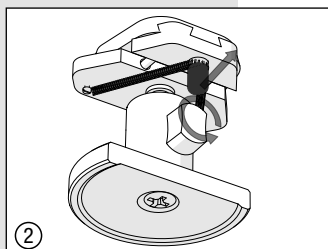
Device description

The Parallelometer (REF 5362) is designed for the following applications:

- Clasp measurement
- Determination of the direction of insertion
- Blocking out undercuts
- Fixing of attachments and auxiliary parts

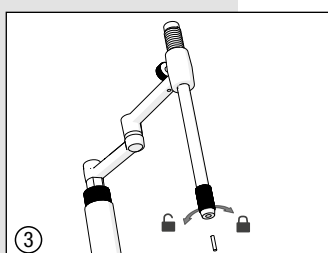
Technical data:

Height / width / depth (mm) 240 / 220 / 310, weight (kg): 2.24



Delivery scope

- Basic device with mounted collet for \varnothing 2.35 mm
- Model holder (also available separately, REF 5270)
- Graphite leads, 1 package (10 pieces) \varnothing 2.00 mm
- Measurement accessories (Fig.1) also available as set, REF 5362.008:
 1. Guiding pin
 2. Wax scraper
 3. Cone
 4. Measurement instrument (0.25 mm = small diameter)
 5. Measurement instrument (0.50 mm = medium diameter)
 6. Measurement instrument (0.75 mm = large diameter)



Using the Parallelometer

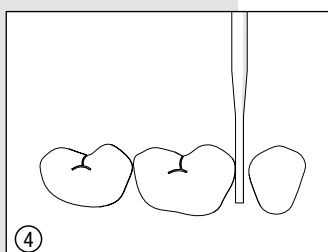
Clamping the model (Fig. 2)

Loosen the ball joint by turning the flat screw to make sure the model table is freely movable. The model is clamped by a spiral spring. To do so, pull the round black pin.

Clamping tools (Fig. 3)

Turn the cap nut to clamp or remove tools.

Attention: Make sure to hold the tools before loosening to prevent them from falling down.



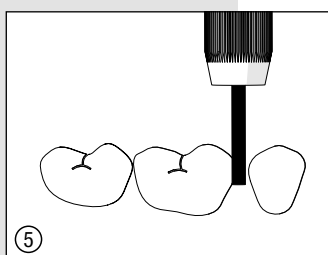
Guiding pin (Fig. 4)

After determining the direction of insertion, tighten the screw of the ball joint from the model holder again to fix it (see also Fig. 2).

Graphite leads (Fig. 5)

For marking the prosthetic equator.

Attention: Clamp the leads carefully to prevent them from breaking off.



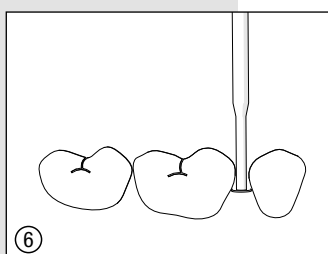
Measurement instruments acc. to Ney (Fig. 6)

0.25 mm / 0.5 mm / 0.75 mm

If necessary, correct the direction of insertion to define undercuts.

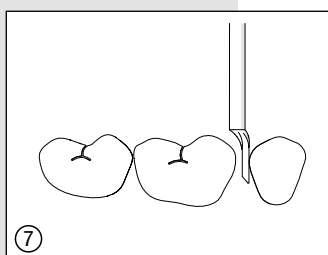
Wax scraper (Fig. 7)

For removing wax when blocking out.



Care instructions

Make sure to use only dry or slightly damp cloths for cleansing.



Security advice

- The tools are partly sharp-edged and may cause injuries.
- Avoid accidental contact.
- Insert the measuring instruments in the bore holes of the base plate after use.
- Repairs must be solely carried out by authorised specialists.

