

Dual-Top TAD System & Orthonia Driver

- Self drilling and self tapping
- No pilot hole, tissue punch, incision, or flap necessary
- 100% Biocompatible - Titanium Alloy
- Low profile - comfortable for your patient

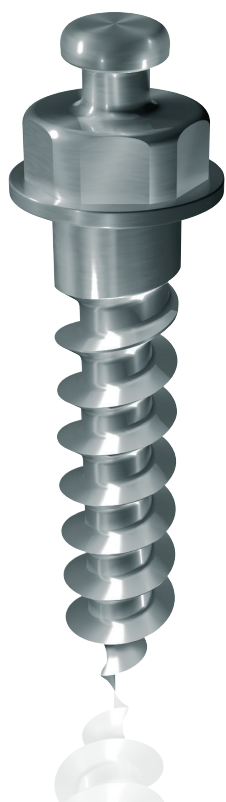
DUAL-TOP
ANCHOR SYSTEM
ANCHORAGE WHERE AND WHEN YOU NEED IT.

ORTHONIA



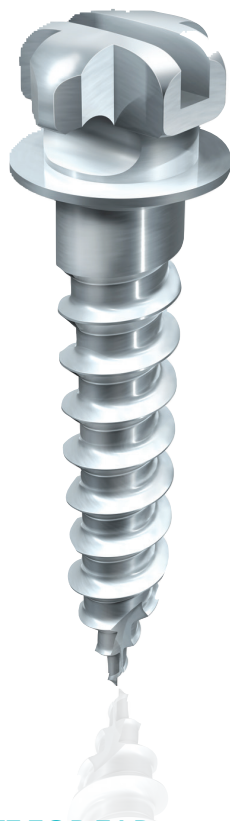
DUAL-TOP

ANCHOR SYSTEM



BUTTON TOP TAD

- Small upper button
- Easy to attach Energy Chain™ or NiTi Coil Spring
- Secure retention of attachments
- Low profile-patient comfort
- Oversized collar resists gingival overgrowth



BRACKET TOP TAD

- Arch slot of .022" for arch wire insertion
- Easy to ligate conventionally
- Oversized collar resists gingival overgrowth



CROSS TOP WITH COLLAR TAD

- Cross top arch slot .022" allows for arch wire insertion
- Easy to attach Energy Chain™ or NiTi Coil Spring
- Oversized collar resists gingival overgrowth

SIZE AVAILABILITY

- 1.4mm x L 6mm
- 1.4mm x L 8mm
- 1.6mm x L 6mm
- 1.6mm x L 8mm
- 1.6mm x L 10mm
- 2.0mm x L 6mm
- 2.0mm x L 8mm
- 2.0mm x L 10mm

DUAL-TOP TAD SYSTEM Dual-Top TAD System Kit

Kit Components Include:

Button Driver Shaft (for Hand Driver Body)	1ea
Bracket Driver Shaft (for Hand Driver Body)	1ea
TAD System Storage Block	1ea
Hand Driver Body	1ea
Button Top TAD Diameter x Length	
1.4mm x L 6mm	1ea
1.4mm x L 8mm	2ea
1.6mm x L 6mm	4ea
1.6mm x L 8mm	2ea
2.0mm x L 8mm	1ea
Bracket Top TAD Diameter x Length	
1.6mm x L 6mm	2ea
1.6mm x L 8mm	2ea



ORTHONIA TORQUE DRIVER

Orthonia is a high-performing, battery powered torque driver used for placing Temporary Anchorage Devices. It helps mitigate TAD failures during insertion procedures.

- Reverse rotation function effective for proper and safe removal of TADs
- Convenient and easy to set up, user-friendly designed LCD and push button control panel
- Torque limit setting: 5 torque limit levels ranging from 10N-cm to 30N-cm
- Safety feature engages when torque limit is exceeded
- Rechargeable driver

ORTHONIA



Driver Adapter for Straight Shaft (included)



Driver Adapter for Contra-Angle (included)

CONVENIENT AND EASY TO SET UP

Orthonia has a user friendly designed LCD, push button control panel, and rechargeable driver

2 SPEED LEVELS

Orthonia has 2 speed levels:
LOW - 15 RPM
HIGH - 20 RPM

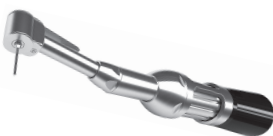
REVERSE FUNCTION

Orthonia has a reverse function effective for proper and safe removal of TADs



OTHER DRIVERS

Lingual Driver for TAD



Hand Driver Body



Torque Limiting Driver



TAD ACCESSORIES

TAD NI-TI COIL SPRINGS WITH EYELETS

TAD Coil Spring; NiTi Closed .010" x .030" - 7mm

TAD Coil Spring; NiTi Closed .010" x .030" - 9mm

TAD Coil Spring; NiTi Closed .010" x .030" - 12mm

TAD Coil Spring; NiTi Closed .010" x .030" - 15mm



TAD NI-TI COIL SPRINGS WITH OVAL EYELETS

TAD Coil Spring; Oval Eyelet; NiTi Closed .010" x .030" - 8mm

TAD Coil Spring; Oval Eyelet; NiTi Closed .010" x .030" - 10mm

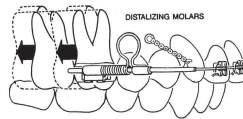
TAD Coil Spring; Oval Eyelet; NiTi Closed .010" x .030" - 12mm

MAXILLARY DISTALIZING ARCHES FOR USE WITH TADS

Maxillary Distalizing Arch Kit

Kit Components Include:

Maxillary Distalizing Arch For Use With TADs - Size 1	1ea
Maxillary Distalizing Arch For Use With TADs - Size 2	1ea
Maxillary Distalizing Arch For Use With TADs - Size 3	1ea
Maxillary Distalizing Arch For Use With TADs - Size 4	1ea
Maxillary Distalizing Arch For Use With TADs - Size 5	1ea
Distalizing Arch Selector	1ea
Orthonal Coil Springs	10/pkg



INDIVIDUAL COMPONENTS

Maxillary Distalizing Arch For Use With TADs - Size 1	3/pkg
Maxillary Distalizing Arch For Use With TADs - Size 2	3/pkg
Maxillary Distalizing Arch For Use With TADs - Size 3	3/pkg
Maxillary Distalizing Arch For Use With TADs - Size 4	3/pkg
Maxillary Distalizing Arch For Use With TADs - Size 5	3/pkg
Distalizing Arch Selector	1ea
Orthonal Coil Springs	10/pkg

STEP PLIER

Step Plier - 1/2mm

Step Plier - 1mm



1ea

1ea

CRIMPABLE HOOKS AND PLIER

Crimpable Hook Plier

Crimpable Hook

Long Crimpable Hook



1ea

10/pkg

10/pkg

