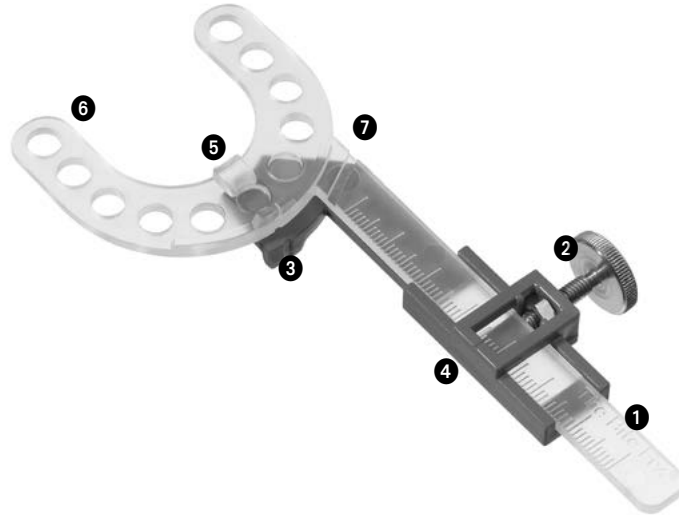
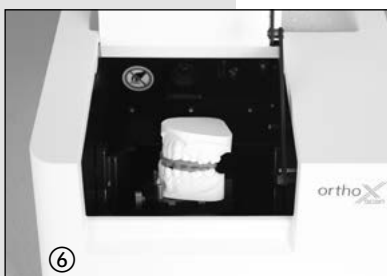
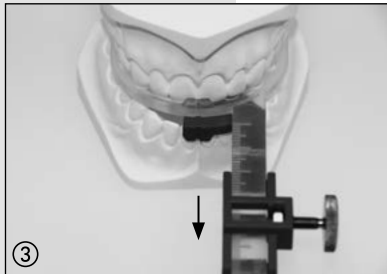
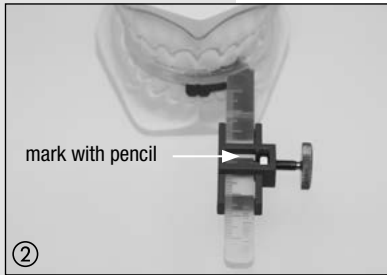
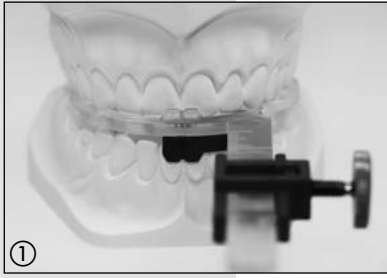


Bite Fix® Scan bite registration

Instructions for use



Loosen the fixing screw ② until the disposable transparent bite fork can be moved.

Insert the Bite Fix® Scan bite registration into the patient's mouth, without any bite registration material yet on it, paying attention to align the bite fork centrally and using the midline markings ③ on the reusable part as an orientation aid (Fig. ①).

Instruct the patient to move the lower jaw in the central position first. In order to obtain a better result in case of insufficient stability at the incisors, apply some bite registration material to the area of the incisor guidance ⑤.

Note: Make sure to apply only a small quantity of bite registration material to the area of the incisor guidance in the lower jaw, in order to avoid jamming of the bite fork.

Mark the central position with a pencil on the millimetre scale (Fig. ②). Then instruct the patient to move the lower jaw to the maximal protrusion and mark the position on the bite fork (Fig. ② + ③).

Remove the Bite Fix® Scan bite registration from the patient's mouth. You can now calculate the advancement of the lower jaw based on the marked protrusion range for the appliance of your choice. Now fix the transparent bite fork with the desired protrusion adjustment using the fixing screw.

Hint: For the TAP® devices a protrusion adjustment of 50-60% is recommended.

Apply bite registration material to both sides of the bite fork. Reinsert the Bite Fix® Scan bite registration into the patient's mouth in the desired protrusive position and check on a central alignment (Fig. ④).

Once the bite registration material has cured, you can remove the bite fork from the patient's mouth (Fig. ⑤).

Loosen the fixing screw ② and disconnect the bite fork from the basic element ④. Then separate the millimetre scale ① at the pre-determined breaking point ⑦ from the disposable bite fork. The Bite Fix® Scan can now be used together with the plaster models in a model scanner ⑥. **Clean before use!**

Hint: We recommend a fast setting, addition-curing bite registration material on the base of vinyl-polysiloxane (silicone). The bite fork should be well covered.

Cleaning and maintenance: The basic element and the fixing screw are reusable and can be sterilized in an autoclave at 121°C. We recommend choosing a delicate programme for heat sensitive material.

The transparent bite fork ⑥ however, is for single use only.

Hint: It is recommended to dismantle the Bite Fix® Scan bite registration before cleaning. Make sure not to use the Bite Fix® Scan in case it is visibly damaged or has been modified.

For professional use only.

