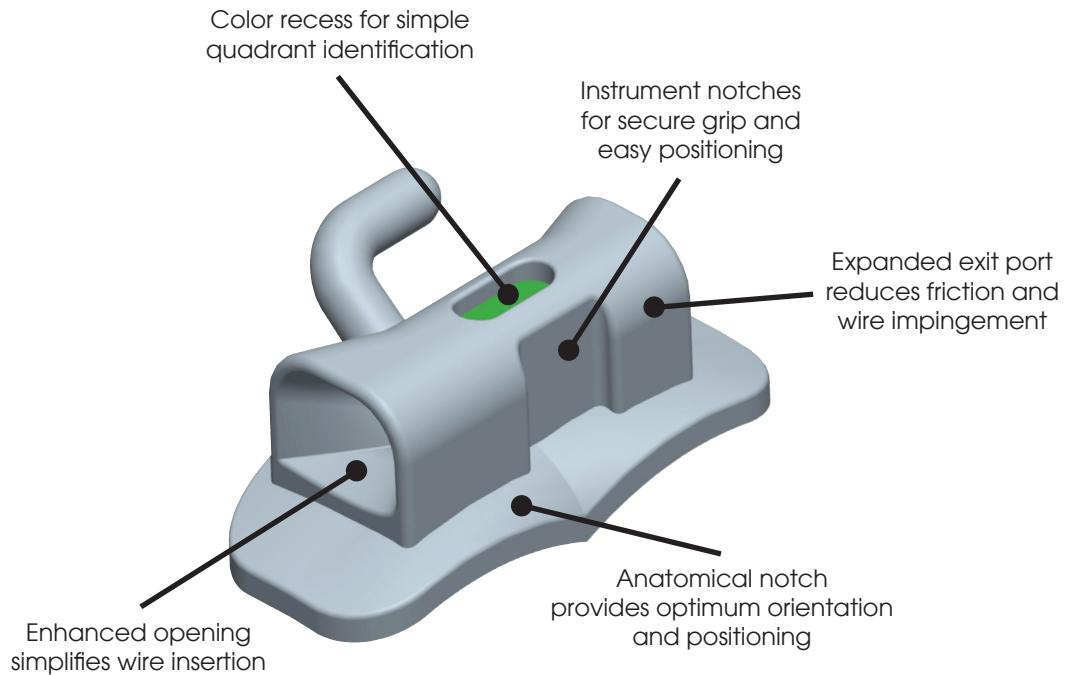
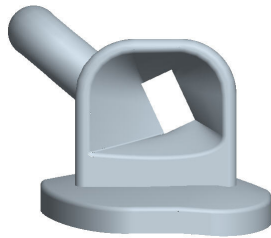
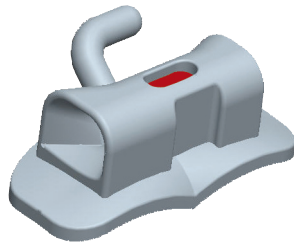


FLI® Buccal Tubes

FLI[®] B U C C A L
TUBES

RMO®'s FLI® Buccal Tubes deliver superior performance in an extremely small package. With Metal-Injection-Molded (MIM) construction for smooth comfortable contours, the ultra-low profile design features enhanced mesial openings that make wire insertion a snap. Combined with RMO®'s anatomical bases, the FLI® Series is ideal for both direct bond and molar band applications.



Material: Bracket - AISI 316L Stainless Steel

Base: (1) Pad - AISI 316L Stainless 80-gauge Foil-Mesh™

(2) Patented 1-Piece RMO® Base Molded Construction

Competition:

3M Unitek Victory Series™

American Ortho Low Profile™ Series

Ormco Accent® Buccal Tubes

Ortho Organizers Maestro™ Buccal Tubes

Opal Ortho Avex Suite Series



Features	Benefits
Smooth, Rounded Low-Profile Design	Aesthetically inspired with enhanced patient comfort
	Reduced occlusal interference
Enlarged Funneled Entrance	Easy wire insertion provides quicker wire change
Funneled Exit	Facilitates distal-end cutting and wire bending to minimize cheek irritation
Placement Notches	Simplified handling and placement
Anatomical Base Notch	Optimal orientation and positioning reduces guesswork and chair time
	Fitted contours for easy adaptation and bonding to molar surfaces
Facial Recess	Aids scalar positioning on molars
Direct Bond Construction	Consistent and predictable bonding
	Saves chair time and hassle of banding * Note: some FLI® Tubes are offered in weldable option as well
Color Quadrant Coding	Quick and easy identification saves time
Distal-Gingival Relief	On 2 nd Molar Bases for added comfort and easy placement on partially erupted molars

FIRST MOLAR

Angulation	Torque	Distal Offset	M-D	R / L	.018"		.022"	
					On Bases	Tubes Only	On Bases	Tubes Only
0°	-10°	0°	4.5 mm	R	A08730	A06730	A08734	A06734
				L	A08731	A06731	A08735	A06735
0°	-10°	10°	4.5 mm	R	A18750		A18754	
				L	A18751		A18755	

SECOND MOLAR

Angulation	Torque	Distal Offset	M-D	R / L	.018"		.022"	
					On Bases	Tubes Only	On Bases	Tubes Only
0°	-10°	0°	3.5 mm	R	A08732	A06732	A08736	A06736
				L	A08733	A06733	A08737	A06737
0°	-10°	10°	3.5 mm	R	A18752		A18756	
				L	A18753		A18757	

FIRST MOLAR

Angulation	Torque	Distal Offset	M-D	R / L	.018"		.022"	
					On Bases	Tubes Only	On Bases	Tubes Only
0°	-25°	0°	4.5 mm	R	A08740	A06740	A08744	A06744
				L	A08741	A06741	A08745	A06745
0°	-25°	5°	4.5 mm	R	A18758		A18762	
				L	A18759		A18763	

SECOND MOLAR

Angulation	Torque	Distal Offset	M-D	R / L	.018"		.022"	
					On Bases	Tubes Only	On Bases	Tubes Only
0°	-25°	0°	3.5 mm	R	A08742	A06742	A08746	A06746
				L	A08743	A06743	A08747	A06747
0°	-25°	5°	3.5 mm	R	A18760		A18764	
				L	A18761		A18765	

FLI[®] MINI TUBES

RMO[®]'s New FLI[®] Mini Tubes are specifically designed for partially erupted 2nd molars, offering a perfect solution for early stages of bonding. The bonding base features a mesially-extended contour ideal for adapting to a small crown bonding surface. A smooth, low profile design assures both working ease and enhanced patient comfort. FLI[®] Mini Tubes also feature a trumpeted entry to facilitate quick and easy wire changes reducing valuable chair time.



Material: Bracket - AISI 17-4PH Stainless Steel
Molded one-piece construction

Competition: 3M Unitek Victory Series™ Ormco Peerless[®] Mini Tubes
Ortho Organizers Elite[®] Series Ortho Classic Bio-Mini Tubes

Features	Benefits
Smooth, Comfortable Low-Profile Design	Aesthetically inspired with enhanced patient comfort
	Reduced occlusal interference
Mini Tube Design	Perfect for adapting to small crown surfaces as opposed to traditional direct bond tubes
Molded Contoured Base	Superior fit and predictable bonding
	Mesially-extended for ideal placement on partially erupted 2 nd molar cusps
Mushroom Style Hook	Added patient comfort through minimized cheek irritation
Flared Entry	Easy wire insertion providing quicker wire changes
Torque-in-Base	Optimal slot alignment reduces guesswork and chairtime
Unique ID	Quick and easy identification saves time

SECOND MOLAR

ID	Torque	Distal Offset	M-D	R / L	.018"		.022"	
◆	0°	0°	2.5 mm	UR/LL	A18770		A18780	
				UL/LR	A18771		A18781	
●	-10°	0°	2.5 mm	UR	A18772		A18782	
				UL	A18773		A18783	
●	-14°	0°	2.5 mm	UR/LL	A18774		A18784	
				UL/LR	A18775		A18785	
■	-25°	0°	2.5 mm	LR	A18776		A18786	
				LL	A18777		A18787	